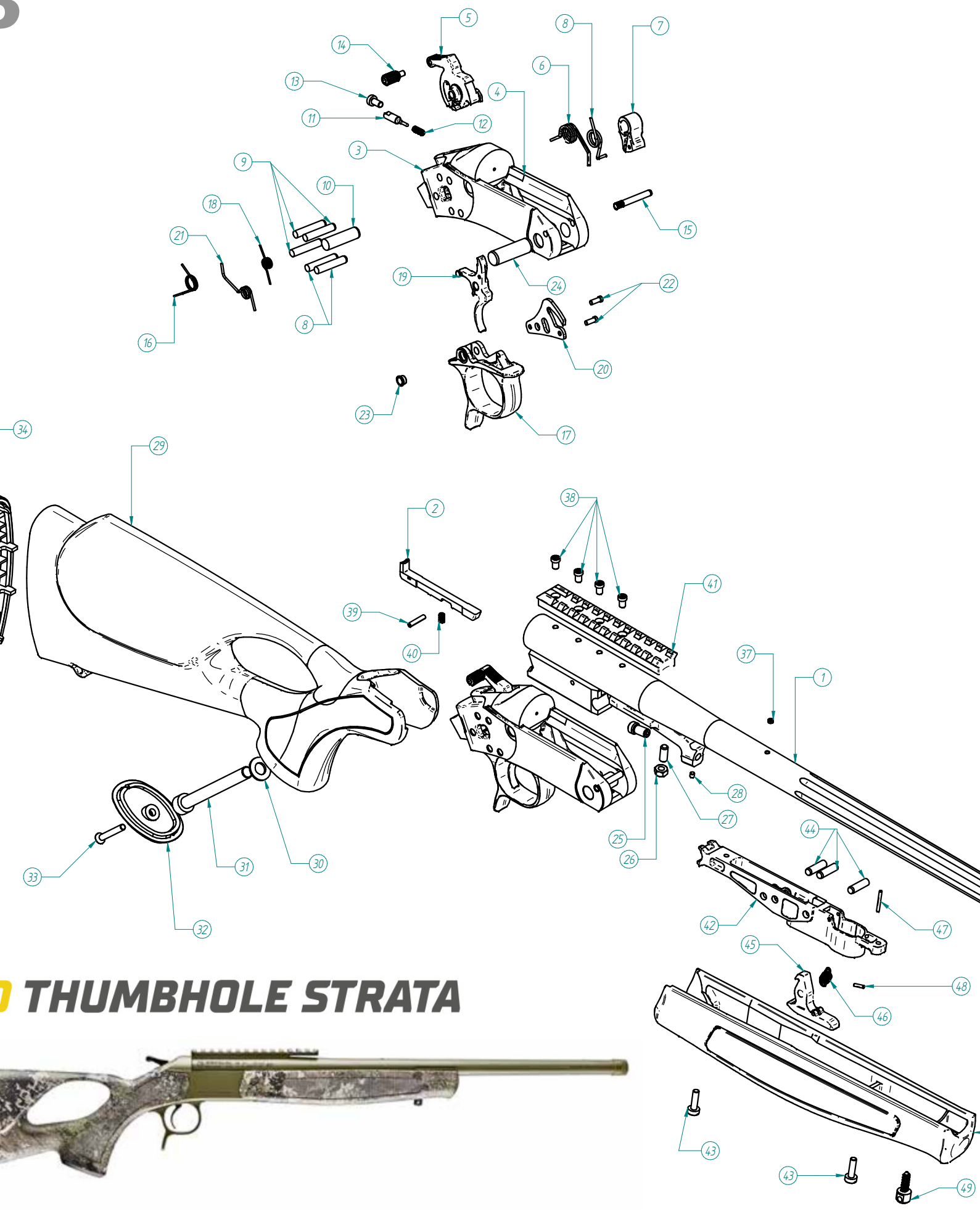


2023

ROW



BA123-65ST
6.5 Creed
308 Win



	Item	Description		
1	CAÑÓN / BARREL	TUBTD510CR TUBTD502CR	32194R-BA13TD-STDØ17,2[6.5CRP1:8E6L20C]PAV 5/8EU 32194R-BA13TD-STDØ17,2[308P1:12E6L20C]PAV 5/8EU	X X
2	EXTRACTOR / EXTRACTOR	29955M	EXPULSOR DE MIM CAL.30-06	X X
3	CUBRE ROSCAS / THREAD PROTECTOR	30582N	CUBRE-ROSCAS	X X
4	BASCULA / FRAME	BMETD002C	33162- BASCULA SC V2 TD BERGARA MECANIZADA NEGRA	X X
5	MARTILLO / STRIKING PIECE	30952M	STRIKING PIECE - SCOUT 2 M4x0.35	X X
6	MUELLE MARTILLO / STRIKING PIECE SPRING	30965	MUELLE MARTILLO SCOUT 2	X X
7	LEVA DE CIERRE / LOCKING LEVER	32588	LEVER - SCOUT V2	X X
8	MUELLE DE TRORSION / TORSION SPRING	30949C	MUELLE TRORSION FUERTE - SCOUT V2	X X
9	PASADOR D=5 / D=5 PIN	31909	PASADOR - PIN 5x24	X X
10	PASADOR LEVA DE CIERRE / LOCKING LEVER PIN	31905	PASADOR EJE DEL CIERRE	X X
11	PERCUTOR / FIRING PIN	31183	EJE PERC.	X X
12	MUELLE DE PERCUTOR / FIRING PIN SPRING	31198	MUELLE DEL PERCUTOR DEL APEX	X X
13	TORN. RETEN. DE PERCUTOR / FIRING PIN RETAIN SCREW	31182	TORNILLO M4x8 DIN-7984	X X
14	SPUR / HAMMER SPUR	31721	SPUR SCOUT M4x0.35	X X
15	PASADOR TOPE APERTURA / OPENING STOP PIN	31949	PASADOR TOPE SC 2	X X
16	MUELLE RETORNO MARTILLO / HAMMER RETURN SPRING	30982	MUELLE RETORNO SCOUT 2ª GEN	X X
17	GUARDAMONTES / TRIGGER GUARD	30948	GUARDAMONTE SCOUT-OPTIMA V2 NEGRO	X X
18	MUELLE GATILLO / TRIGGER SPRING	30944	PULLING PIECES SPRING - SCOUT II	X X
19	GATILLO / TRIGGER	30943	PULLING PIECE SCOUT 2	X X
20	LEVA APERTURA / OPENNING LEVER	31455	GARFIO OPTIMA V2	X X
21	MUELLE LEVA APERTURA / OPENNING LEVER SPRING	30945	OPENNING LEVER SPRING - SCOUT II	X X
22	REMACHE LEVA APERTURA / OPENNING LEVEL FIXING PIN	31859	FIXING PIN - SC 2	X X
23	ESPACIADOR / BUSHING	31950	CASQUILLO - BUSHING	X X
24	PASADOR D=10 / D=10 PIN	31907	PASADOR - PIN	X X
25	TOPE REGULADOR / ADJUST SCREW	31873	TOPE ROSCADO	X X
26	TUERCA DE BLOQUEO / BLOCKING NUT	28288	TUERCA M-5 DIN 934	X X
27	VARILAL REGULACION / ADJUST ROD	32163	VARILLA ROSCADA M5x12 DIN 913	X X
28	ESPARRAGO DE BLOQUEO / BLOCKING ROD	31539	ESPARRAGO ALLEN M3x3 DIN 913	X X
29	CULATA / STOCK	30493ST	CULATA THUMBHOLE CAMO TRUE TIM.STRATA	X X
30	ARANDELA UNION CULATA BASCULA / FRAME-STOCK WASHER	W503241	WASHER B 8.4 DIN 125 (BLUED)	X X
31	TORNILLO UNION CULATA-BASCULA / FRAME STOCK BOLT	31908	TORNILLO UNION	X X
32	ESCUDO / GRIP	30743	GRIP CAP BERGARA	X X
33	TORNILLO AMARRE ESCUADO / GRIP CUP SCREW	32258	TORNILLO M4x30 DIN 966	X X
34	CATONERA / RECOIL PAD	29891B	CANTONERA BERGARA - BREAK ACTIONCANTONER	X X
35	TORNILLO AMARRE CANTONERA / RECOIL PAD SCREW	10448	TOR. CAB. AVELL.3.5x30 DIN 7505A	X X
36	GUARDAMANOS / FOREHAND	32156TTS	FOREHAND SCOUT TD TUE TIMBER STRATA CAMO	X X
37	TAPON ROSCADO / SCREW CAP	29256	TAPON ORIFICIO A-M	X X
38	TORNILO CARRIL / TRACK SCREW	33145	TORNILLO TORX 8-40 UNS RAIL ACCESORIO	X X
39	PASADOR EXTRACTOR / EXTRACTOR PIN	30209	PASADOR ESPIRAL DE 3 x 14 DIN 7343	X X
40	MUELLE EXTRACTOR / EXTRACTOR SPRING	30238	MUELLE DEL EXTRACTOR	X X
41	CARRIL / TRACK	40312	CARBON STEEL BARREL RAIL	X X
42	ESTRUCTURA INTERIOR / INTERNAL STRUCTURE	32146B	ESTRUCTURA INTERIOR	X X
43	TORNILLO AMARRE / LOCKING SCREW	32145	TORNILLO M4x16	X X
44	PASADOR DE PALANCA / HAND LEVER SPRING	31552	PASADOR DE PALANCA DE GUARDAMANO	X X
45	PALANCA / HAND LEVER	32155	PALANCA	X X
46	MUELLE DE PALANCA / HAND LEVER SPRING	32152	MUELLE PALANCA	X X
47	PASADOR ELASTICO Ø2x16 / Ø2x16 ELASTIC PIN	32150	PASADOR ELASTICO Ø2x16 DIN7343	X X
48	PASADOR ELASTICO Ø2x8 / Ø2x8 ELASTIC PIN	32151	PASADOR ELASTICO Ø2x8 DIN7343	X X
49	PORTA CORREAS / SWIVEL SCREW	29116	BACK SCREW	X X
*		E210	CERAKOTE E-210 ELITE MOSS	X X

BA13 TD THUMBHOLE STRATA

